



Feel the
luxury and sophistication
in every square feet!



NAV KAR
F E E L

A PROJECT BY PARKONS GROUP



Want the opulence of a bungalow in an apartment? Sounds incredible, doesn't it..? Well, not really!

Welcome to **Navkar Feel** and experience this idea in concrete reality.

Navkar Feel, coming up in the pleasant locality of Padmachhaya Society in Kharadi, is a luxurious project of 2 BHK garden view homes surrounded by posh bungalows.

These spacious homes are designed to offer you the look and feel of a bungalow. So though you would live in an apartment, you will enjoy the style and sophistication of a cute bungalow!

The best-in-class specifications in every room offer you the ultimate in comfort, underlined by a touch of grace.

While the cozy interiors will add charm to your living, the exterior is equally enchanting. Planned to perfection, the attractive elevation stands out clearly.

But the piece of cake, as they say, is beautifully landscaped garden of 20,000 sft. Whether you take a leisurely stroll in it or enjoy it from your window, this garden is a delight to the senses.

Navkar Feel is a masterpiece that truly elevates your lifestyle to the next level.





Live close to class and convenience

A thoughtfully chosen location is what puts **Navkar Feel** in a league of its own. Padmachhaya Society is an upscale address in town that spells class and convenience. It is a cosmopolitan locality that puts you within easy reach of some of the best schools, malls, multiplexes and trendy restaurants. Now experience peace and privacy while enjoying quick and easy access to all modern day conveniences.

The Kharadi IT Park and a host of elite corporate offices are also quickly accessible from the site.





STRUCTURE

- Earth Quake resistance RCC frame structure
- 6"brickwork for the internal & external walls
- Pop finish all internal wall
- Double coat sand face plaster externally

PAINTING

- Oil bond paint for internal walls
- Long life cement paint to external walls
- Oil Paint to all door except main door

FLOORING

- Vitrified flooring in all rooms
- Antiskid / rustic tiles in all toilets / terraces

DOORS

- Laminated main door with good quality door fittings
- Good quality of internal flush doors with cylindrical lock
- Four sided granite frames to toilet

WINDOW

- 3/2 track UPVC sliding windows
- Exhaust fan provision in kitchen and toilet
- M.S. safety grills for all windows
- Granite / marble frame for all windows

TOILETS

- Designers wall tiles up to ceiling
- R' mark good quality concealed plumbing work

- Hot and cold mixer units with overhead shower in all toilets
- Health faucet with bib cock in all toilets
- Jaquar or equivalent make C.P. fittings in all toilets and in kitchen
- Reputed make sanitary wear in all the toilets

KITCHEN

- L – Shaped or one main & one service premium granite kitchen platform
- Nirali or equivalent make S S sink to the kitchen platform
- Designer wall tiles above kitchen platform up to ceiling
- Provision for exhaust fan
- Good quality water purifier (Eureka Forbes)

ELECTRIFICATION

- Concealed copper wiring of polycab or equivalent make with circuit breaker
- A.C. point in bedrooms
- Adequate power points in kitchen for appliances
- Adequate electrical point in all rooms
- Exhaust fan point in all toilets and in kitchen
- German make schindler or equivalent make electrical switches
- Inverter provision for all the rooms
- Telephone and cable t.v. connection in bed room

WASH AND DRY AREA

- Provision for washing machine
- Inlets & outlets for the washing machine

CONVENIENCES

- Provision for the telephone lines
- Provision for the broadband connection
- Provision for dish antenna

VALUE ADDITION

- Solar water heating system for all toilets
- Paving block in porch
- Intercom system for gate to apartment & apartment to apartment
- Video door phone
- Separate under ground and overhead water tank for PMC drinking water
- Additional bore well water supply

LANDSCAPE

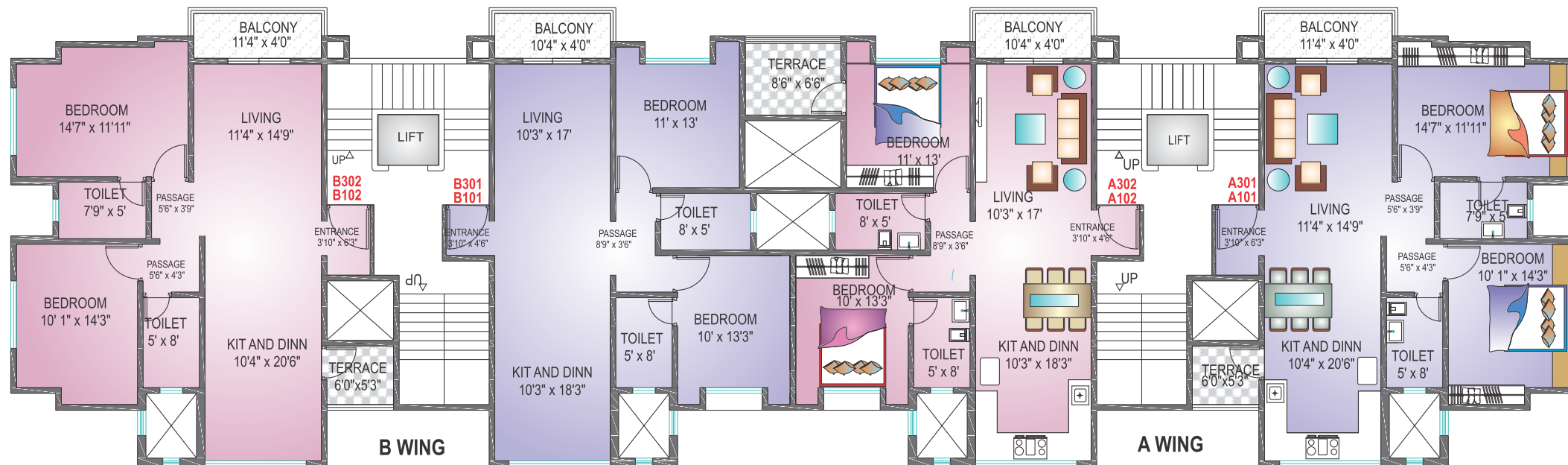
- Landscaping for internal and external beautification

OTHER

- OTIS / KONE or equivalent branded elevator
- 100% back up for lift and common areas
- Letter box for each flat
- Name plate and number plate for each flat
- Name board with flat no. in parking area
- Attractive Entrance Lobby
- Antitrust steel up to plinth





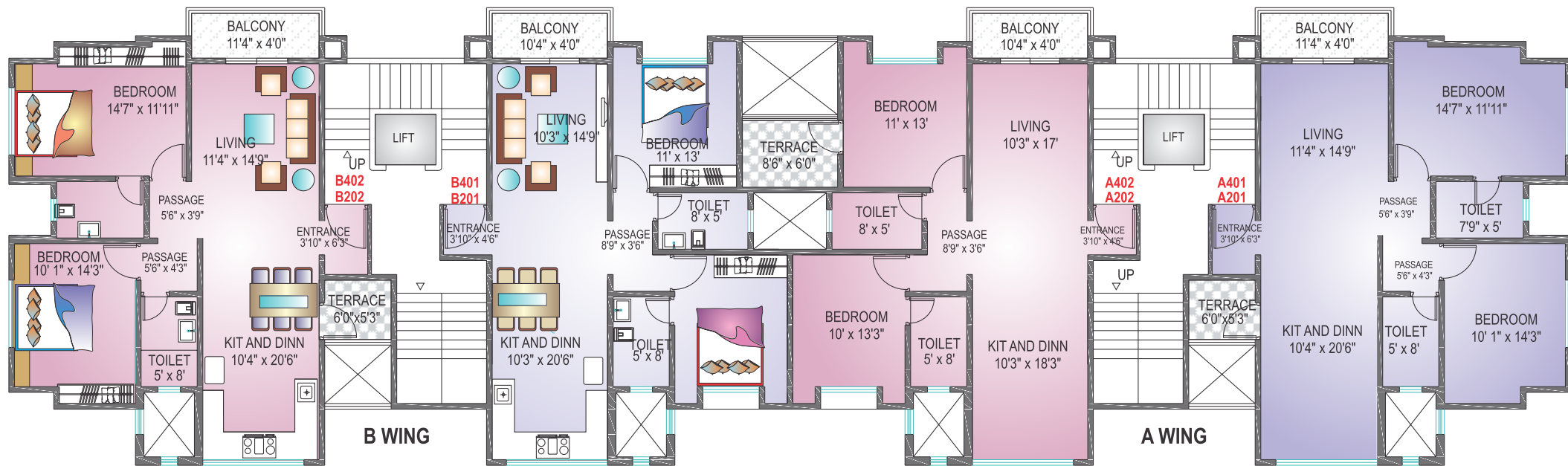


PLAN FOR 1ST, 3RD FLOOR

AREA STATEMENT IN SQ.FT.

FLAT NO	CARPET	TERRACE	TOTAL CARPET	SALABLE BUILT
A 101/301	895	30	910	1183
A 102/302	798	54	825	1072
B 101/301	796	—	796	1035
B 102/302	895	30	910	1183





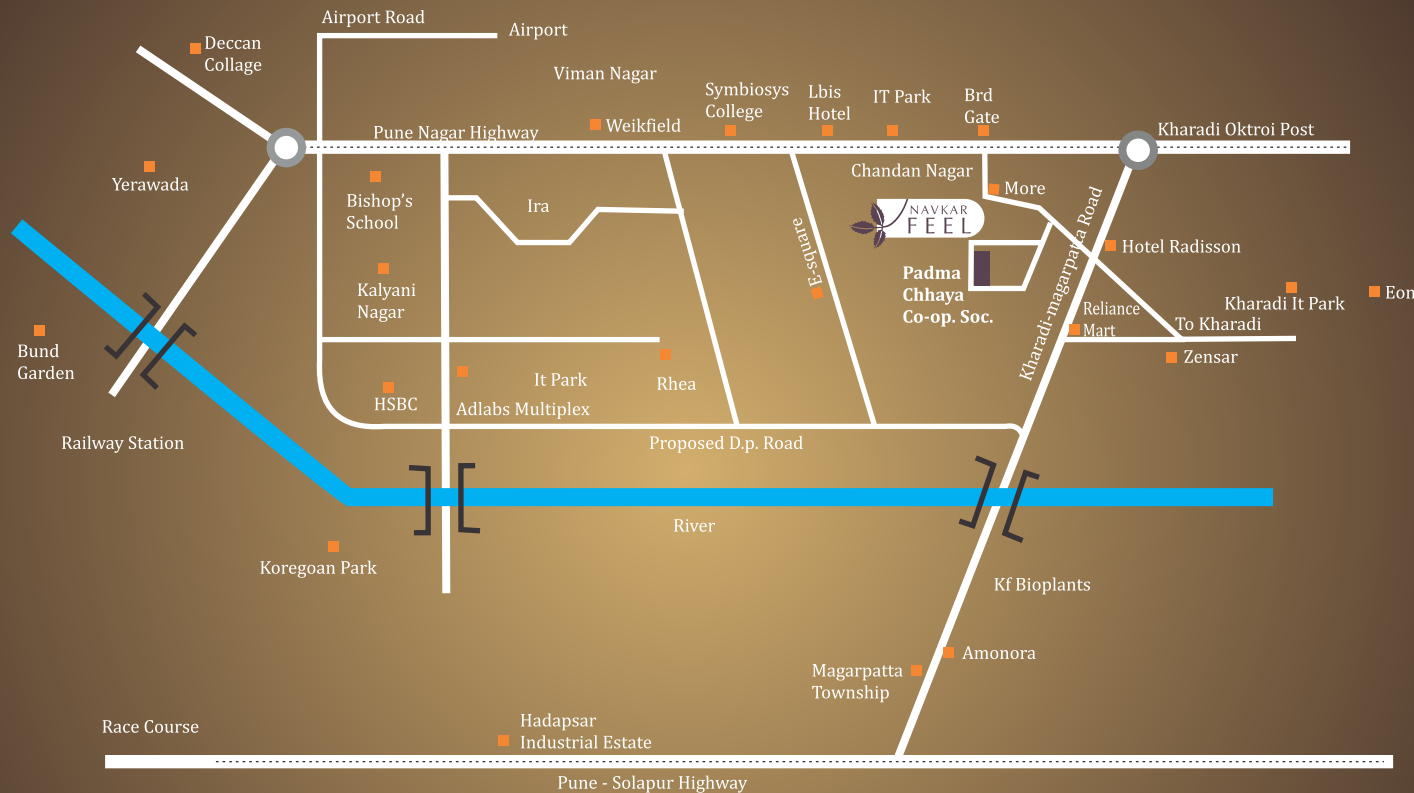
PLAN FOR 2nd & 4th Floor Plans



AREA STATEMENT IN SQ.FT.

FLAT NO	CARPET	TERRACE	TOTAL CARPET	SALABLE BUILT
A 201/401	895	30	910	1183
A 202/402	798	54	825	1072
B 201/401	796	—	796	1035
B 202/402	895	30	910	1183

Site Address : S.No 35, Plot No. 58 to 61, Padma Chhaya Co-op. Hsg. Soc.,
Raghvendra Nagar, Kharadi. Pune : 411 014.



Architects & Concepts
Vijay M. Tipnis
Yashraj Comfortable Systems

Structural Consultants
Altron Consultant

Legals
Adv. S.V. Nahar

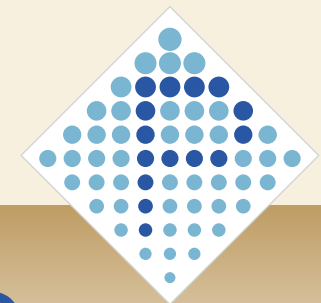
Reliance Mart.....	1.00 Kms
Bollywood E-square.....	1.00 Kms
Amanora Mall.....	3.00 Kms
Bishop School.....	3.50 Kms
Airport.....	5.00 Kms
Koregoan Park.....	5.50 Kms
Pune Station.....	8.00 Kms

Building trust, Creating value

Navkar Feel is a project by **Parkons Group**,
a name that is known for its singular
dedication to quality, commitment and
transparency.

Young and enthusiastic professionals
have joined hands with experienced
people to make up a high performing team;
cozy lifestyle is our biggest inspiration and
customer satisfaction, our greatest challenge.

After creating 20 plus landmark projects
consisting 800 plus units. the dynamic team
is all set to repeat its success with **Navkar Feel**,
the latest addition to our rich portfolio.



PARKONS
CREATING LIFESTYLES

30, United Apartments, 2407, East Street, Camp, Pune : 411 001, **Tel.: 91-20-65008600/01**
Email : parkonsgroup@gmail.com. **URL :** www.parkonsgroup.com